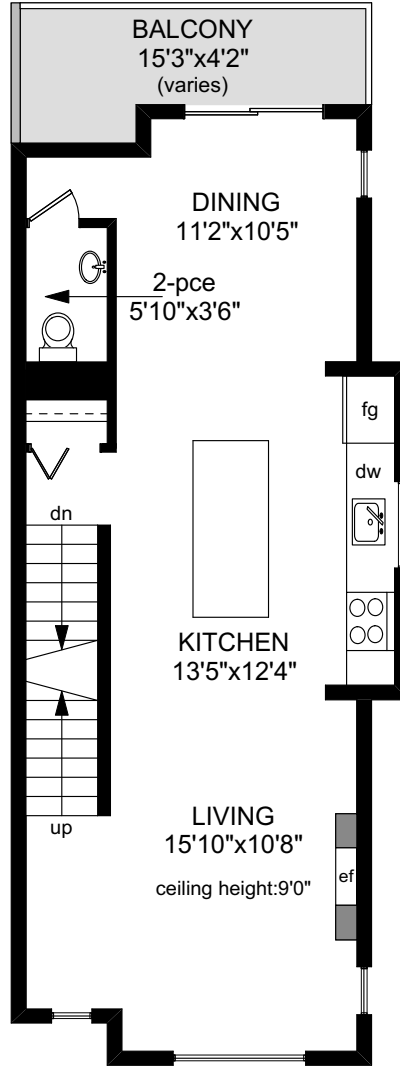
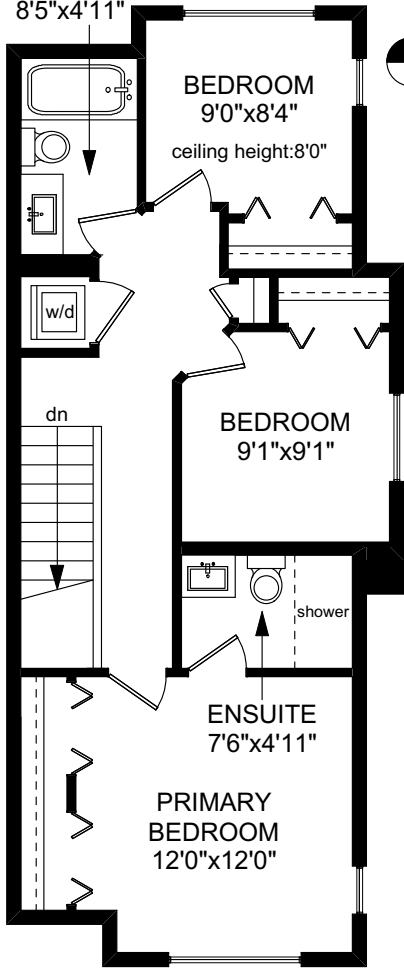


# 109 - 3501 DUNLIN STREET

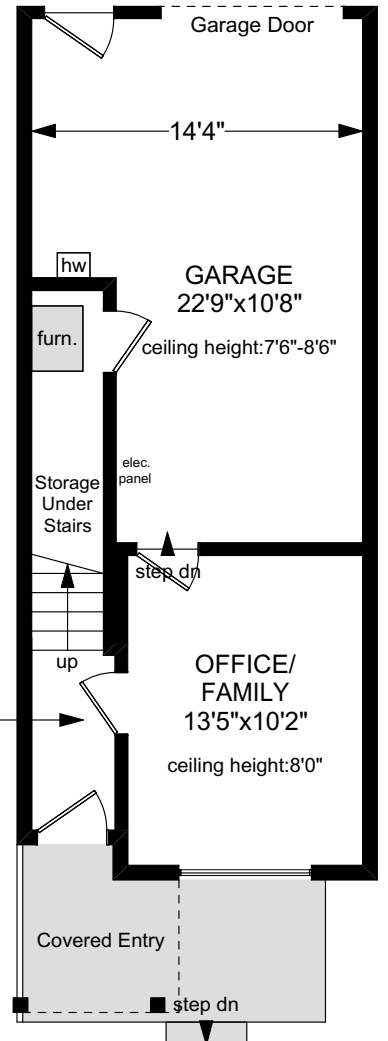
4-pce  
8'5"x4'11"

**UPPER FLOOR**  
630 SQ.FT.



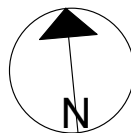
**MAIN FLOOR**  
630 SQ.FT.

**LOWER FLOOR**  
255 SQ.FT.



NOTE: The room name labels/sizes are for viewing reference only. They are not to be used for calculating total square footage.

	FINISHED SQ. FT.	UNFINISHED SQ. FT.	TOTAL SQ. FT.
MAIN	630	0	630
UPPER	630	0	630
LOWER	255	0	255
<b>TOTAL</b>	<b>1515</b>	<b>0</b>	<b>1515</b>
GARAGE	0	309	309
BALCONY	0	76	76



PREPARED FOR THE EXCLUSIVE USE OF  
THE NEAL ESTATE GROUP WITH  
RE/MAX GENERATION

MEASURED ON: 06/23/23  
DRAWING FILE: 18624

**Tafemeasure** VICTORIA, B.C.  
Ph.2508838894  
www.tafemeasure.com