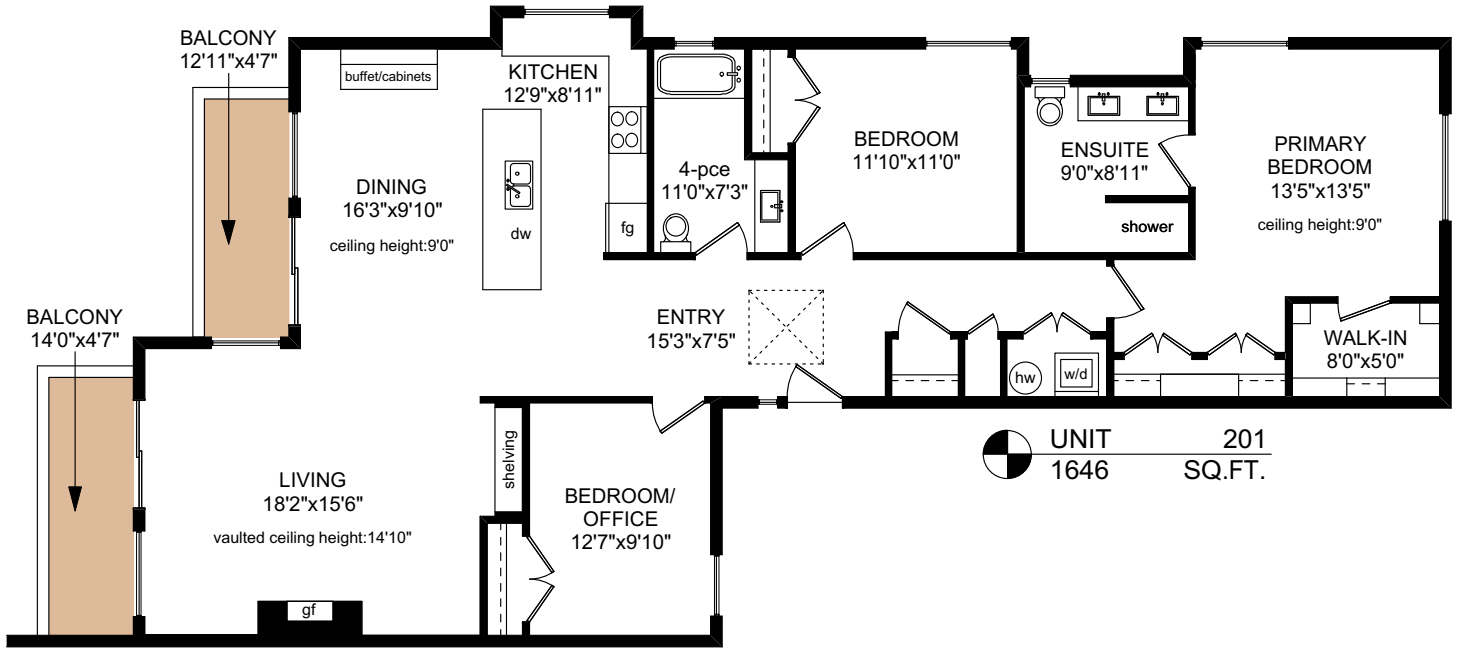
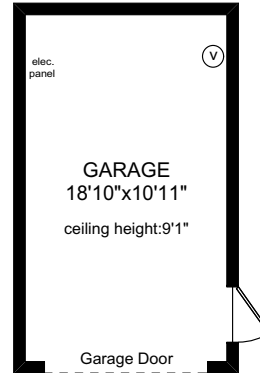


201 - 2329 BRADFORD AVENUE

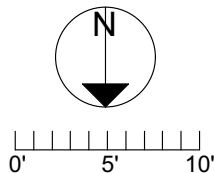


Ground Level



NOTE: The room name labels/sizes are for viewing reference only. They are not to be used for calculating total square footage.

	FINISHED SQ. FT.	UNFINISHED SQ. FT.	TOTAL SQ. FT.
MAIN	1646	0	1646
TOTAL	1646	0	1646
GARAGE	0	225	225
BALCONIES	0	123	123



PREPARED FOR THE EXCLUSIVE USE OF
THE NEAL ESTATE GROUP WITH
RE/MAX GENERATION

MEASURED ON: 06/29/23
DRAWING FILE: 18633

Tafemeasure VICTORIA, B.C.
Ph. 883.8894
www.tafemeasure.com